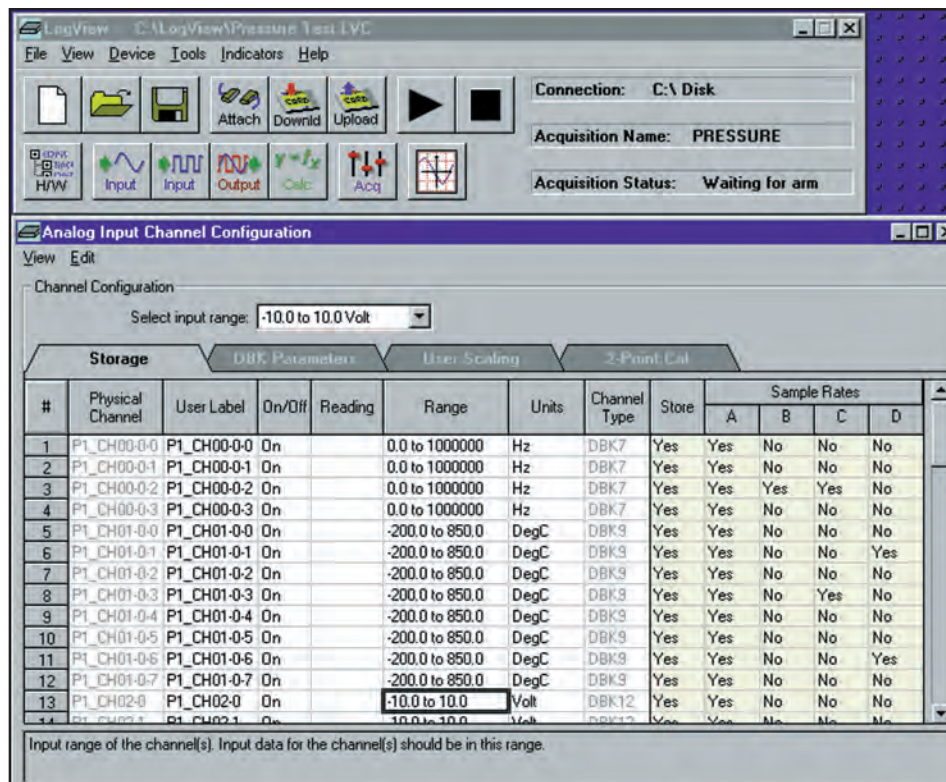


LogView Software Simplifies Setup

LogView* uses a series of spreadsheets to allow simple setup and display of all channel parameters. No auxiliary dialog boxes, configurable block diagrams, or programming methodologies are employed.

All of the parameters for the analog I/O, digital I/O, counter/timers, and calculated channels can be viewed and adjusted through LogView's unique spreadsheet interface. The spreadsheets make it possible to see and adjust the parameters of many channels concurrently, unlike typical data logging software that requires channels to be set up one at a time through auxiliary dialog boxes.



LogView's analog input spreadsheet makes viewing and adjusting many channels easy

Channel parameters are independent of one another and include:

- Turning the channel on or off
- Programmable input range for analog input channels
- Scaling and offset for engineering units conversion
- Any or all of four timebases to log the channel
- The equation that defines the calculated channel
- The physical output channel to direct a calculated or input channel
- Special parameters specific to certain signal conditioning modules

All inputs including analog, digital, frequency and calculated channels are collected synchronously so that data from widely dissimilar inputs can be correlated in time.

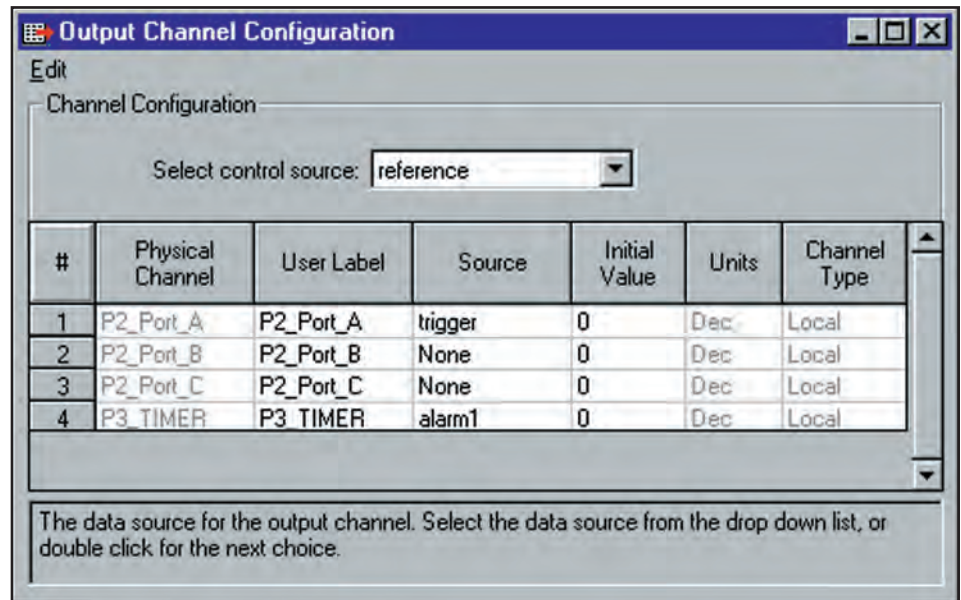
Within the analog spreadsheet, an offset adjustment or 2-point calibration can be performed for each channel. This function compensates for inaccuracies in signal conditioning circuitry and sensors.

LogView provides a file concatenate feature for combining separately uploaded data segments, from the same trigger block, into one file.

* Supported Operating Systems: Windows 2000®, Windows Vista® x86 (32-bit), and Windows XP®

Digital Outputs

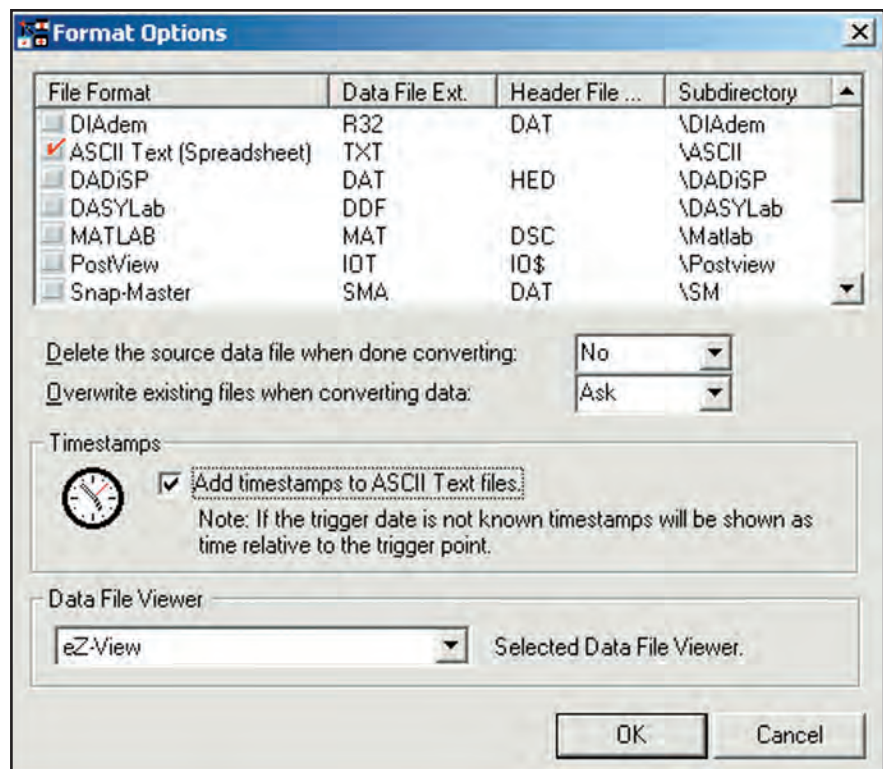
The LogBook's digital outputs allow it to control external devices and/or stimulate the unit under test. Using LogView's calculated channels, equations can be derived that can be used to stimulate digital outputs for use as alarms or for on/off control*. For example, the equation $DIG1 = (CH1 - CH2) < 20$ turns on digital output 1 if the difference between channels 1 and 2 is less than 20.



Output values are easily computed using calculated channels

Data Formats and Data Files

Data collected with the LogBook can be uploaded to your PC's hard disk in any or all of several data formats for post acquisition analysis. Some of the available file formats include ASCII Text, DASyLab®, DADiSP™, MATLAB®, DIAdem, .WAV, UF-F58A, and UFF58B, which are compatible with virtually all post acquisition analysis software. LogView creates the necessary headers for each data format so that the post acquisition analysis software can use the channel labels, the acquisition time-base information, and other necessary parameters.

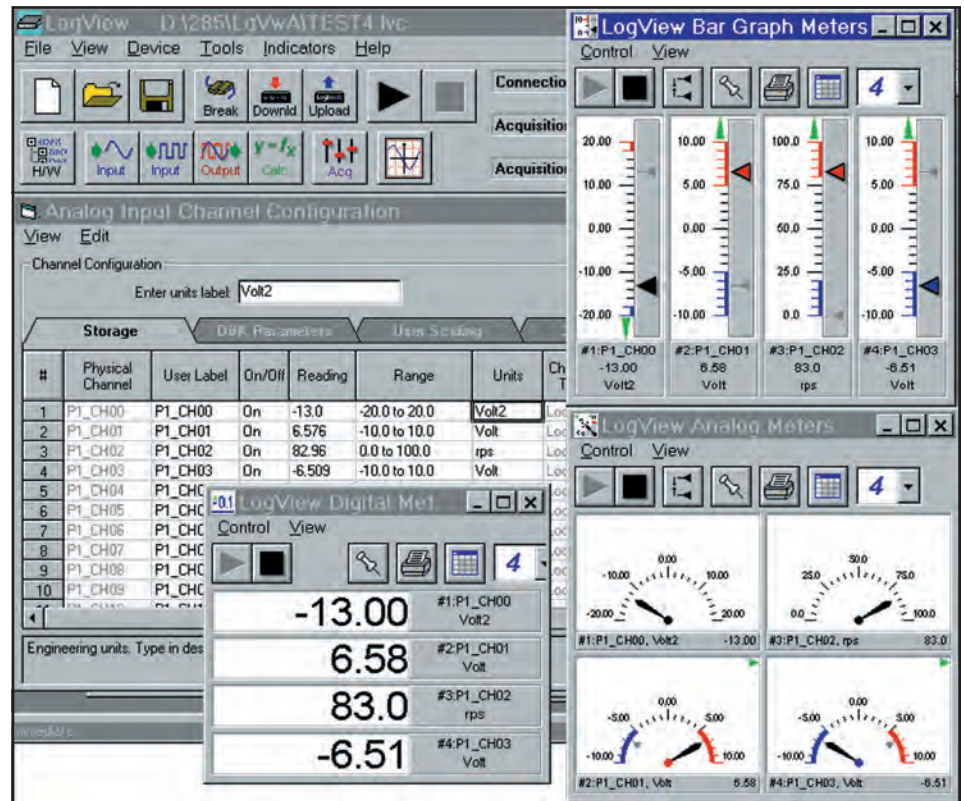


LogView can convert collected data to several file formats

* Not for PID specific control applications

Auxiliary Real-Time Indicators

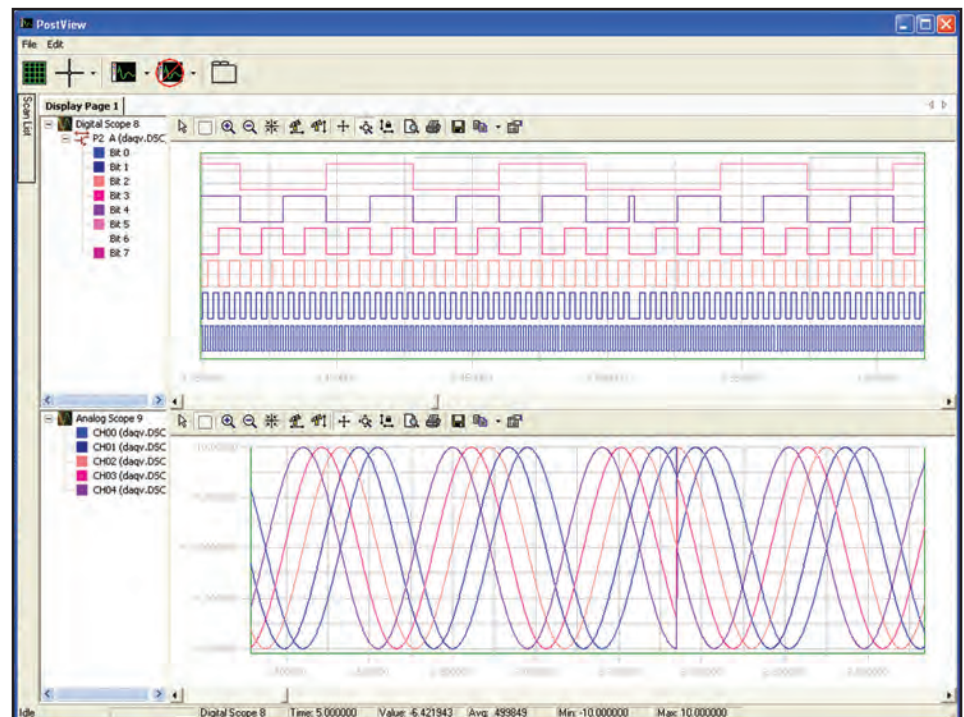
Along with displaying channel data from an attached LogBook in real time in the setup spreadsheets, LogView also provides real-time indicators. These indicators provide a means of monitoring the real-time channel values so that signals can be verified. Each indicator provides a high degree of setup flexibility to customize your display.



Real-time indicators provide channel feedback from an attached LogBook

PostView

PostView is a time-domain post-acquisition data viewing package which is integrated and ready to use from within your View package when you install it. PostView provides easy to use basic time-domain data viewing for IOtech data acquisition Out-of-the-Box View packages.



PostView for post-acquisition viewing