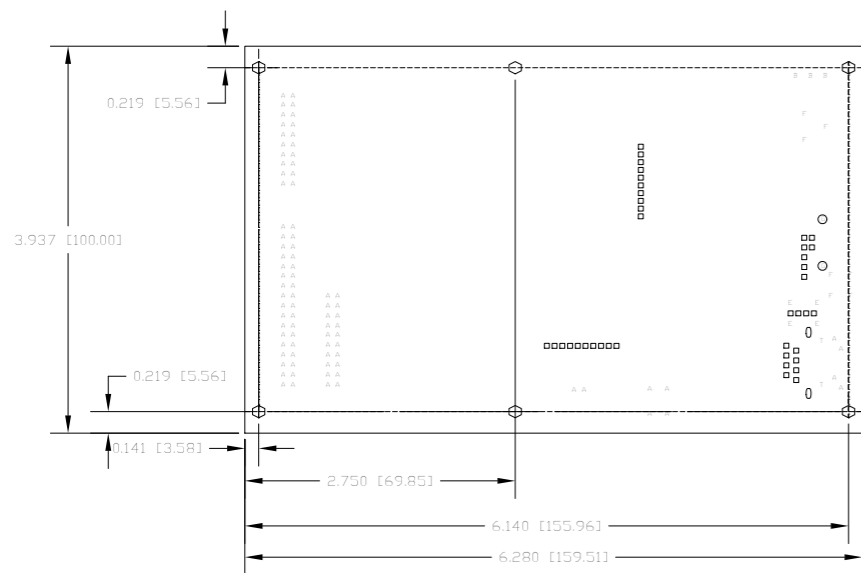


THIS DRAWING CONTAINS PROPRIETARY INFORMATION WHICH IS THE CONFIDENTIAL PROPERTY OF DATA TRANSLATION, INC. IT SHALL NOT BE COPIED, REPRODUCED, DISCLOSED, PUBLISHED OR USED IN THE WHOLE OR IN PART WITHOUT THE EXPRESSED WRITTEN PERMISSION OF DATA TRANSLATION, INC.

REVISIONS					
DWN	LTR	DESCRIPTION	CHECKED	DATE	APPROVED
SB	0	INITIAL RELEASE		5-22-15	
SB	1	REVISED PER ECO-000127		10-14-15	

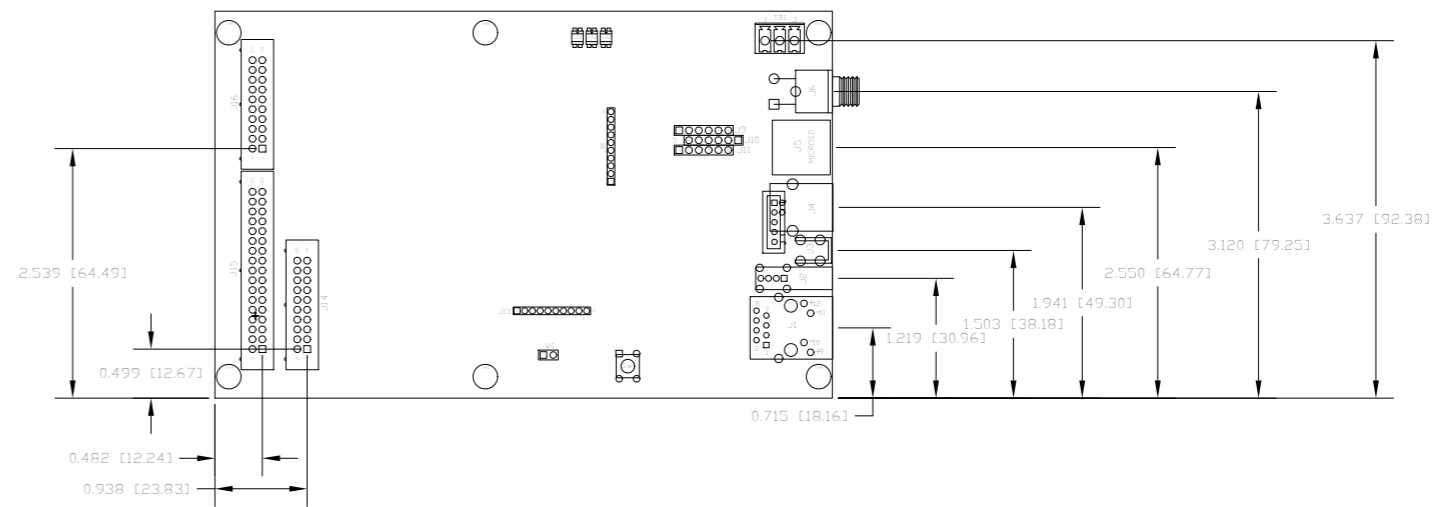
PCB DIMENSIONS AND HOLE LOCATIONS



1. MATERIAL: .0628 +/- .005 THICK, FR-370HR LAMINATE AND PCL-FRP-370HR PREPREG OR EQUIVALENT.

DRILL CHART: TOP to BOTTOM			
ALL UNITS ARE IN MILS			
FIGURE	SIZE	PLATED	QTY
.	5.0	PLATED	259
.	7.9	PLATED	1052
.	10.0	PLATED	101
◊	13.0	PLATED	32
◊	25.0	PLATED	19
◊	35.0	PLATED	42
◊	40.0	PLATED	102
◊	47.0	PLATED	3
◊	52.0	PLATED	4
◊	62.0	PLATED	2
◊	67.0	PLATED	7
◊	90.0	PLATED	2
◊	125.0	PLATED	6
◊	130.0	NON-PLATED	2

COMPONENT LOCATIONS



MAXIMUM COMPONENT HEIGHT
SOLDER SIDE = .100 [2.54]
COMPONENT SIDE = .736 [18.7]

COMPONENT CHART			
REF. DES	MANUFACTURER	MANUFACTURER P/N	DT P/N
J1	BOTHHAND	LUI5041C-43 LF	23554
J2	TE CONNECTIVITY	292336-1	25757
J3	KEYSTONE	7774	22744
J4	TE CONNECTIVITY	292304-2	17257
J5	MOLEX	503182-1853	25666
J6	SWITCHCRAFT	L722RA	24798
J8,13	SAMTEC	TMM-110-01-F-S	25788
J9,10,11	FCI	68000-406HLF	25706
J14,16	3M	30320-6002HB	26119
J15	3M	30334-6002HB	26134
J8,13	SAMTEC	TMM-110-01-F-S	25788
J9,10,11	FCI	68000-406HLF	25706
CR1,2,3	DIALIGHT	593-303030-013F	25873
SW1	OMRON	B3W-1002	23560
TB1	PHOENIX CONTACT	1707434	20381
TB1 PLUG	PHOENIX CONTACT	1839610	20380

PCB CHART	
P/N	REV
25849	1

DO NOT SCALE DRAWING REMOVE ALL BURRS AND SHARP EDGES		DRAWN S. BORDEN	DATE 5-22-15	DATA TRANSLATION MARLBORO MASSACHUSETTS 01752	
UNLESS OTHERWISE SPECIFIED DIMENSIONS ARE IN INCHES TOLERANCES .XX .XXX ANGLES ±.02 ±.005 ±1/2°		CHECKED	DATE		
MATERIAL SEE NOTE 1		FINISH SEE NOTES		SIZE D	CODE IDENT NO. DRAWING NO. 26080
NEXT ASSY NEXT ASSY		USED ON USED ON		SCALE 1:1	REV 1